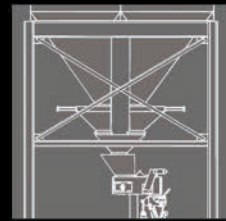
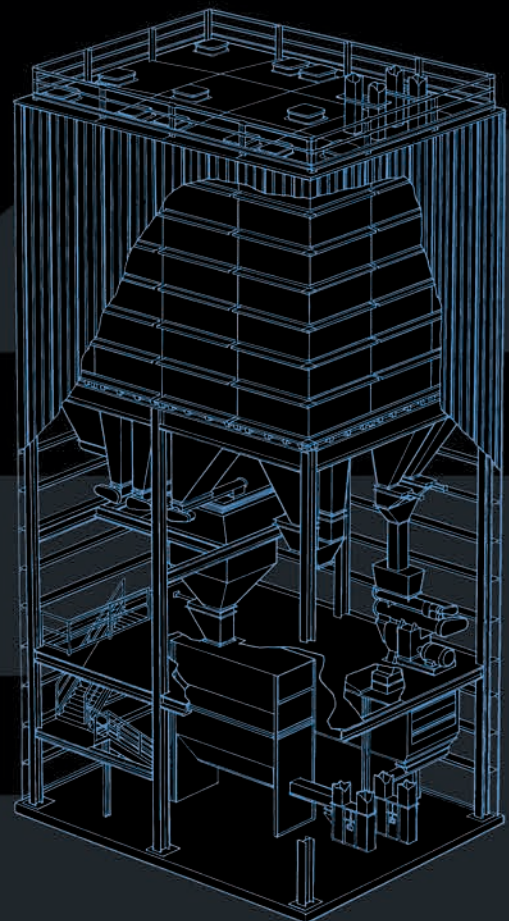


Bolted Bin Systems



intersystems
engineered material handling solutions

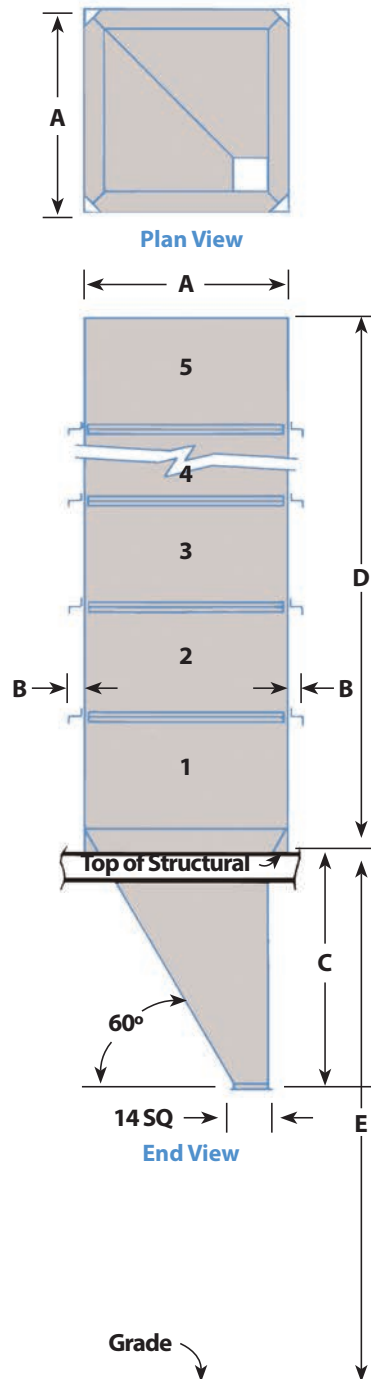


- Animal Feed • Biofuels • Cement • Ceramics
- Milling • Minerals • Ore-Aggregate • Plastics
- Pulp and Paper • Salt • Specialty Chemicals

Bin System Features

- 1** Virtually any combination of square or rectangular bins.
- 2** Individual bins can hold up to 250 tons of material weighing as much as 150 lb/ft³ (2400 kg/m³). Bin systems can be designed to withstand any seismic or wind load requirements.
- 3** Bolted construction permits efficient shipping and assembly of bins systems anywhere in the world.
- 4** Multiple bin wall designs provide the right combination of features for almost any application.
- 5** Bins can be constructed out of carbon, galvanized or stainless steel. Painted finishes include enamel, epoxy, polyurethane and other specialized coatings.
- 6** A full line of accessories are available and include support structures, access ladders, safety railings, gates, collection hoppers and weigh hoppers.

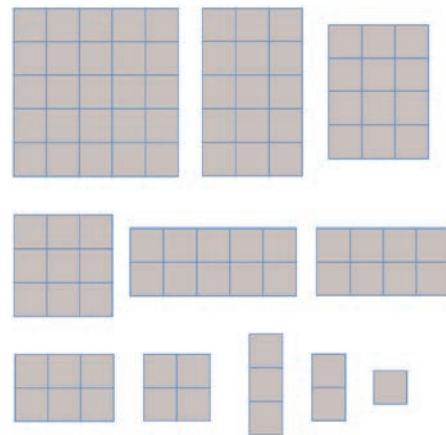
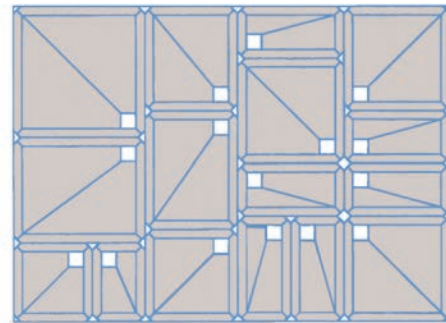
STANDARD BIN DESIGN



Unlimited Possibilities

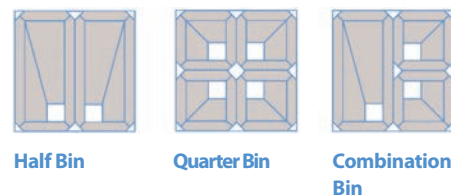
UNLIMITED BIN COMBINATIONS & ARRANGEMENTS

With Intersystems' flexible design, you can specify virtually any bin arrangement and size that you require.



BOLTED BIN DIVISIONS

Each single bin can be split to accommodate multiple product or capacity needs.



- Chemical • Coal • Fertilizer • Food Products • Grain • Malt
- Petrochemical • Pharmaceutical • Processing
- Sugar • Wood Products

Intersystems Bolted Bins: Specifications

	Sections High	Tons Per Bin	Metric Tons Per Bin	Cubic Feet Per Bin	Cubic Meters Per Bin	A	B	C	D	10'-0" Hopper Clr. (A) E	16'-0" Hopper Clr. (B) E	22'-0" Hopper Clr. (C) E	28'-0" Hopper Clr. (D) E
6'0 - BOLTED BINS	1	3.5	3.2	177	5.0	6'-0"	6"	6'-6"	4'-11"	16'-6"	22'-6"	28'-6"	34'-6"
	2	6.2	5.6	312	8.8	6'-0"	6"	6'-6"	8'-8"	16'-6"	22'-6"	28'-6"	34'-6"
	3	8.9	8.1	447	12.7	6'-0"	6"	6'-6"	12'-5"	16'-6"	22'-6"	28'-6"	34'-6"
	4	11.6	10.5	582	16.5	6'-0"	6"	6'-6"	16'-2"	16'-6"	22'-6"	28'-6"	34'-6"
	5	14.3	13.0	717	20.3	6'-0"	6"	6'-6"	19'-11"	16'-6"	22'-6"	28'-6"	34'-6"
	6	17.0	15.4	852	24.1	6'-0"	6"	6'-6"	23'-8"	16'-6"	22'-6"	28'-6"	34'-6"
	7	19.7	17.9	987	27.9	6'-0"	6"	6'-6"	27'-5"	16'-6"	22'-6"	28'-6"	34'-6"
	8	22.4	20.3	1122	31.8	6'-0"	6"	6'-6"	31'-2"	16'-6"	22'-6"	28'-6"	34'-6"
7'0 - BOLTED BINS	1	4.8	4.4	241	6.8	7'-0"	6"	8'-2"	4'-11"	18'-2"	24'-2"	30'-2"	36'-2"
	2	8.5	7.7	425	12.0	7'-0"	6"	8'-2"	8'-8"	18'-2"	24'-2"	30'-2"	36'-2"
	3	12.2	11.1	609	17.2	7'-0"	6"	8'-2"	12'-5"	18'-2"	24'-2"	30'-2"	36'-2"
	4	15.9	14.4	793	22.5	7'-0"	6"	8'-2"	16'-2"	18'-2"	24'-2"	30'-2"	36'-2"
	5	19.5	17.7	977	27.7	7'-0"	6"	8'-2"	19'-11"	18'-2"	24'-2"	30'-2"	36'-2"
	6	23.2	21.1	1161	32.9	7'-0"	6"	8'-2"	23'-8"	18'-2"	24'-2"	30'-2"	36'-2"
	7	26.9	24.4	1345	38.1	7'-0"	6"	8'-2"	27'-5"	18'-2"	24'-2"	30'-2"	36'-2"
	8	30.6	27.7	1529	43.3	7'-0"	6"	8'-2"	31'-2"	18'-2"	24'-2"	30'-2"	36'-2"
	9	34.3	31.1	1713	48.5	7'-0"	6"	8'-2"	34'-11"	18'-2"	24'-2"	30'-2"	36'-2"
	10	37.9	34.4	1897	53.7	7'-0"	6"	8'-2"	38'-8"	18'-2"	24'-2"	30'-2"	36'-2"
	11	41.6	37.7	2081	58.9	7'-0"	6"	8'-2"	42'-5"	18'-2"	24'-2"	30'-2"	36'-2"
	12	45.3	41.1	2265	64.1	7'-0"	6"	8'-2"	46'-2"	18'-2"	24'-2"	30'-2"	36'-2"
8'0 - BOLTED BINS	1	6.3	5.7	315	8.9	8'-0"	8"	9'-11"	4'-11"	19'-11"	28'-11"	31'-11"	37'-11"
	2	11.1	10.1	555	15.7	8'-0"	8"	9'-11"	8'-8"	19'-11"	28'-11"	31'-11"	37'-11"
	3	15.9	14.4	795	22.5	8'-0"	8"	9'-11"	12'-5"	19'-11"	28'-11"	31'-11"	37'-11"
	4	20.7	18.8	1035	29.3	8'-0"	8"	9'-11"	16'-2"	19'-11"	28'-11"	31'-11"	37'-11"
	5	25.5	23.1	1275	36.1	8'-0"	8"	9'-11"	19'-11"	19'-11"	28'-11"	31'-11"	37'-11"
	6	30.3	27.5	1515	42.9	8'-0"	8"	9'-11"	23'-8"	19'-11"	28'-11"	31'-11"	37'-11"
	7	35.1	31.8	1755	49.7	8'-0"	8"	9'-11"	27'-5"	19'-11"	28'-11"	31'-11"	37'-11"
	8	39.9	36.2	1995	56.5	8'-0"	8"	9'-11"	31'-2"	19'-11"	28'-11"	31'-11"	37'-11"
	9	44.7	40.5	2235	63.3	8'-0"	8"	9'-11"	34'-11"	19'-11"	28'-11"	31'-11"	37'-11"
	10	49.5	44.9	2475	70.1	8'-0"	8"	9'-11"	38'-8"	19'-11"	28'-11"	31'-11"	37'-11"
	11	54.3	49.3	2715	76.9	8'-0"	8"	9'-11"	42'-5"	19'-11"	28'-11"	31'-11"	37'-11"
	12	59.1	53.6	2955	83.7	8'-0"	8"	9'-11"	46'-2"	19'-11"	28'-11"	31'-11"	37'-11"
	13	63.9	58.0	3195	90.5	8'-0"	8"	9'-11"	49'-11"	19'-11"	28'-11"	31'-11"	37'-11"
	14	68.7	63.2	3435	97.3	8'-0"	8"	9'-11"	53'-8"	19'-11"	28'-11"	31'-11"	37'-11"
	15	73.5	66.7	3675	104.0	8'-0"	8"	9'-11"	57'-5"	19'-11"	28'-11"	31'-11"	37'-11"
	16	78.3	71.0	3915	110.8	8'-0"	8"	9'-11"	61'-2"	19'-11"	28'-11"	31'-11"	37'-11"
10'0 - BOLTED BINS	1	9.8	8.9	492	13.9	10'-0"	10"	13'-6"	4'-11"	23'-6"	29'-6"	35'-6"	41'-6"
	2	17.3	15.7	867	24.5	10'-0"	10"	13'-6"	8'-8"	23'-6"	29'-6"	35'-6"	41'-6"
	3	24.8	22.5	1242	35.2	10'-0"	10"	13'-6"	12'-5"	23'-6"	29'-6"	35'-6"	41'-6"
	4	32.3	29.3	1617	45.8	10'-0"	10"	13'-6"	16'-2"	23'-6"	29'-6"	35'-6"	41'-6"
	5	39.8	36.1	1992	56.4	10'-0"	10"	13'-6"	19'-11"	23'-6"	29'-6"	35'-6"	41'-6"
	6	47.3	42.9	2367	67.0	10'-0"	10"	13'-6"	23'-8"	23'-6"	29'-6"	35'-6"	41'-6"
	7	54.8	49.7	2742	77.6	10'-0"	10"	13'-6"	27'-5"	23'-6"	29'-6"	35'-6"	41'-6"
	8	62.3	56.5	3117	88.3	10'-0"	10"	13'-6"	31'-2"	23'-6"	29'-6"	35'-6"	41'-6"
	9	69.8	63.3	3492	98.9	10'-0"	10"	13'-6"	34'-11"	23'-6"	29'-6"	35'-6"	41'-6"
	10	77.3	70.1	3867	109.5	10'-0"	10"	13'-6"	38'-8"	23'-6"	29'-6"	35'-6"	41'-6"
	11	84.8	76.9	4242	120.1	10'-0"	10"	13'-6"	42'-5"	23'-6"	29'-6"	35'-6"	41'-6"
	12	92.3	83.7	4617	130.7	10'-0"	10"	13'-6"	46'-2"	23'-6"	29'-6"	35'-6"	41'-6"
	13	99.8	90.5	4992	141.3	10'-0"	10"	13'-6"	49'-11"	23'-6"	29'-6"	35'-6"	41'-6"
	14	107.3	97.3	5367	152.0	10'-0"	10"	13'-6"	53'-8"	23'-6"	29'-6"	35'-6"	41'-6"
	15	114.8	104.1	5742	162.6	10'-0"	10"	13'-6"	57'-5"	23'-6"	29'-6"	35'-6"	41'-6"
	16	122.3	110.9	6117	173.2	10'-0"	10"	13'-6"	61'-2"	23'-6"	29'-6"	35'-6"	41'-6"

Many other sizes and capacities are available.

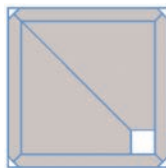
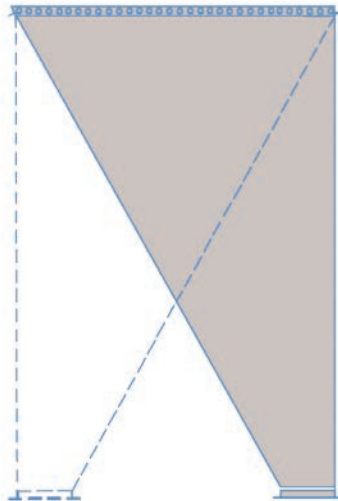
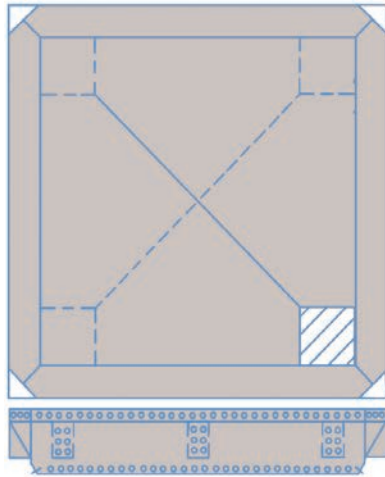
- Animal Feed • Biofuels • Cement • Ceramics
- Milling • Minerals • Ore-Aggregate • Plastics
- Pulp and Paper • Salt • Specialty Chemicals

Unique Hopper Design

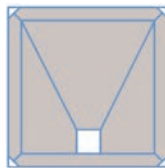
A unique feature of the Intersystems bin system is the removable hopper design. Even after installation of the bin structure, the hopper may be removed and reinstalled. This allows you to change the hopper's discharge position or to completely replace the hopper with one of a different type. Hoppers are available in a wide variety of designs and sizes. To meet your exact requirements, you can specify the minimum wall slope, along with the size, shape and location of the discharge.

STANDARD AND CUSTOM DESIGNS

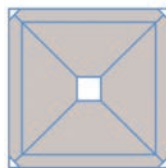
Hoppers can be customized to meet your requirements.



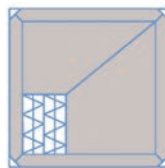
Corner Draw



Side Draw



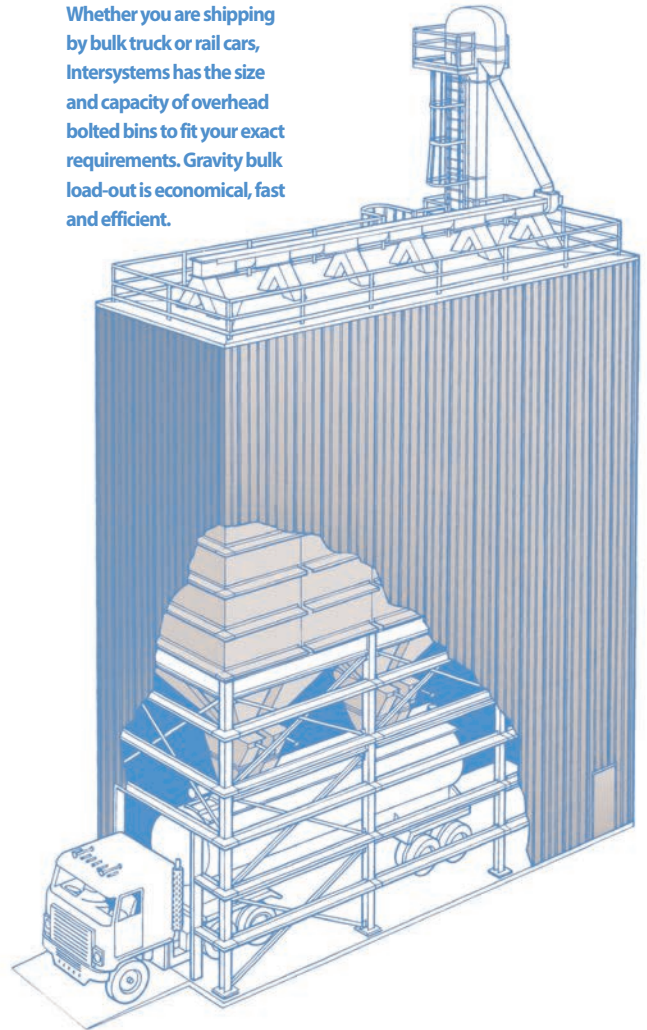
Center Draw



Conveyor (Unloading)

Bulk Load-Out Stations

Whether you are shipping by bulk truck or rail cars, Intersystems has the size and capacity of overhead bolted bins to fit your exact requirements. Gravity bulk load-out is economical, fast and efficient.

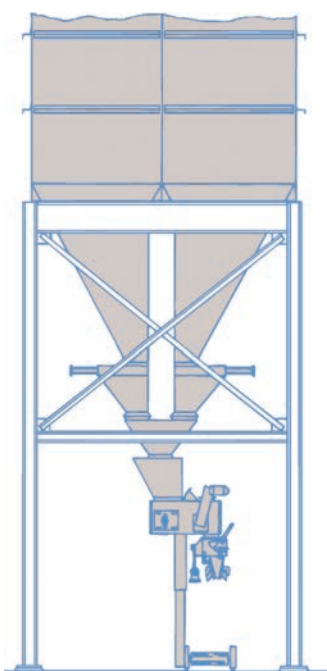


- Chemical • Coal • Fertilizer • Food Products • Grain • Malt
- Petrochemical • Pharmaceutical • Processing
- Sugar • Wood Products

Batching Stations

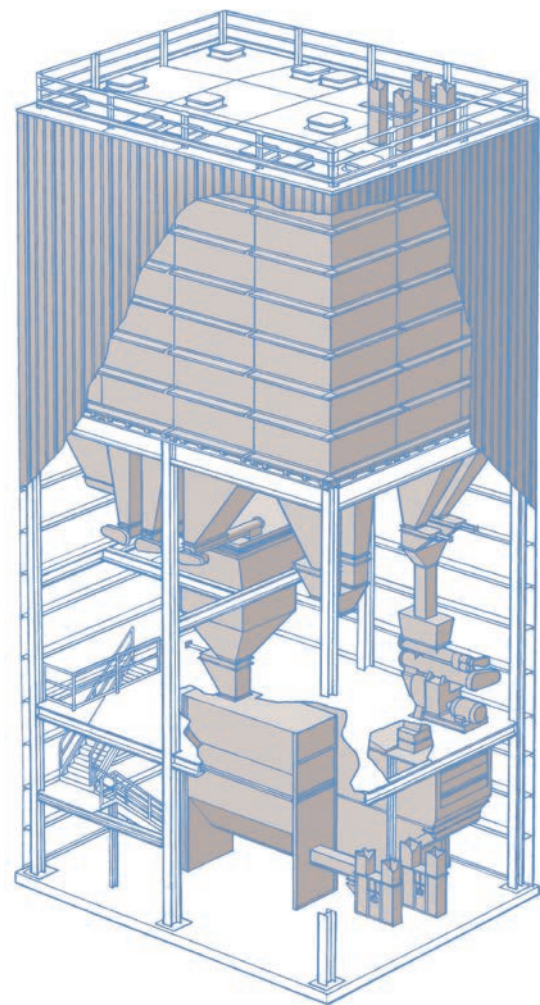
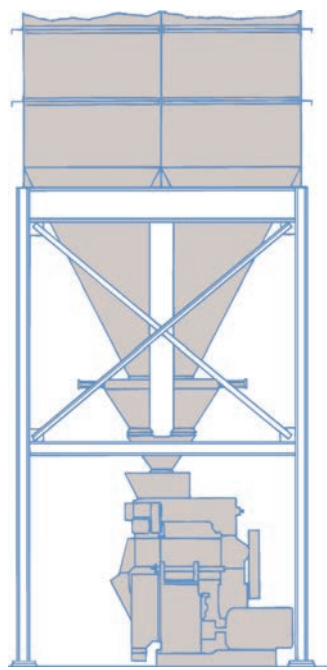
PACKAGING & PROCESS BINS

Bolted bin systems are well suited for a wide variety of applications such as for grinding and packaging lines. Their clear span supporting structure provides easy access to the process equipment below.



BATCHING & BLENDING PLANTS

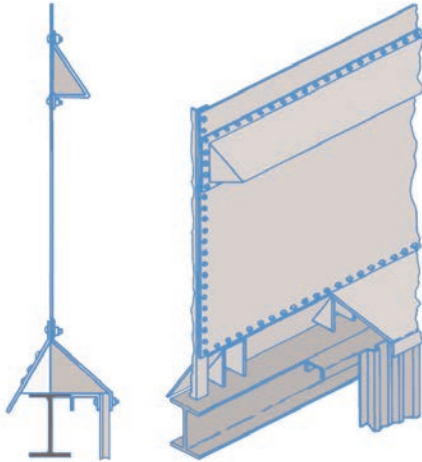
Batching plants are another ideal application for Intersystems bolted bin systems. Scales can be efficiently fed from tightly clustered overhead bins. After a batch of material has been collected in the scale, it can then be dropped by gravity into a mixer.



- Animal Feed • Biofuels • Cement • Ceramics
- Milling • Minerals • Ore-Aggregate • Plastics
- Pulp and Paper • Salt • Specialty Chemicals

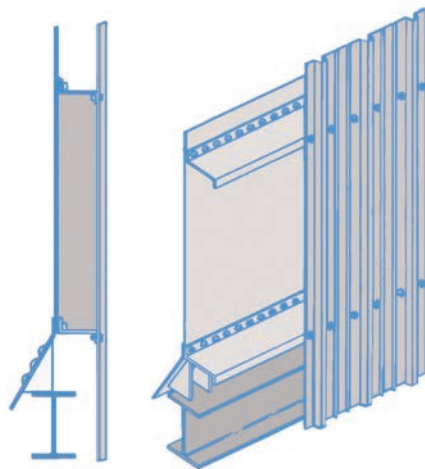
Wall Design

Bin walls are available from 2 feet to 10 feet wide in 3 inch increments.



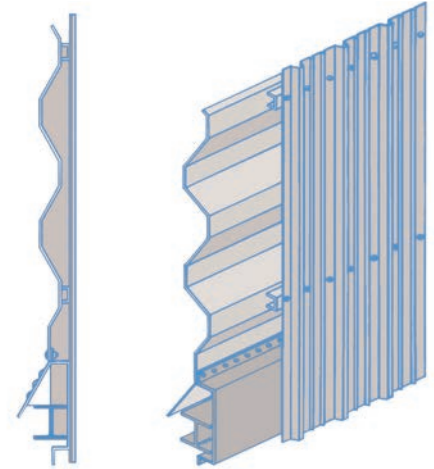
STANDARD EXTERIOR WALL DESIGN

Our standard bin wall design can be provided with either the "Z" type channels or 60° sloped baffles as shown. All interior walls come with 60° sloped baffles. Double wall designs are also available without interior baffles for a smooth surface.



ENCLOSED BIN WALL DESIGN

Our "Z" type panel channels make ideal girts on which to mount steel enclosure paneling.



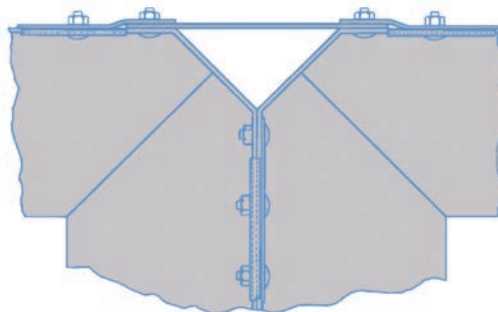
CORRUGATED WALL DESIGN

The corrugated bin wall design eliminates the need for horizontal stiffeners. Optional channel girts can be added on the exterior walls for the application of enclosure paneling.

Corner Design

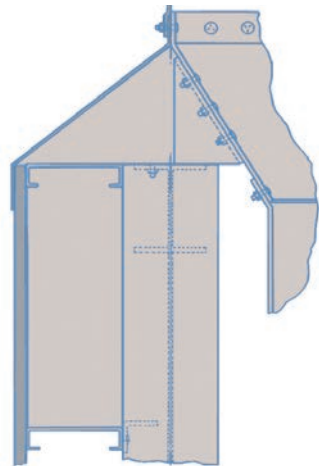
45° BIN CORNER

The 45° corner design provides self cleaning characteristics when storing materials that do not flow well. It is structurally strong and is well suited for plant designs that must support headhouse structures above the bin system.



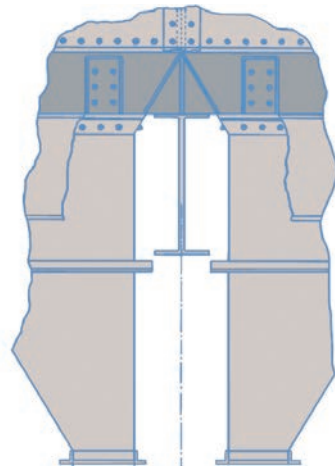
- Chemical • Coal • Fertilizer • Food Products • Grain • Malt
- Petrochemical • Pharmaceutical • Processing
- Sugar • Wood Products

Design Details



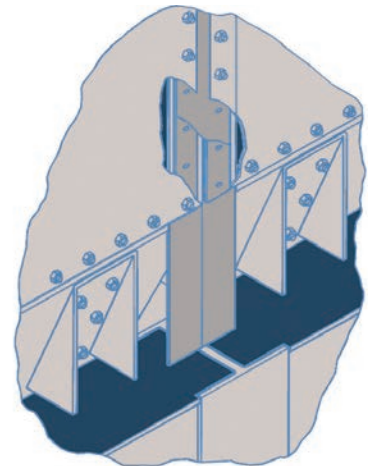
BIN WALL FLASHING

A significant benefit of the bin wall flashing is the ability to easily provide a weather-tight connection between the bin cluster and the surrounding building structure.



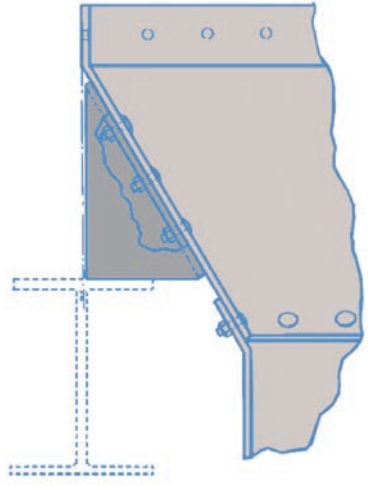
HOPPER STARTER STRIPS

The hopper starter strip provides a simple bolted connection between the hopper and side wall of a bin. It's unique design provides structural support for the bin and allows you to change hopper configurations at any time in the future.



EXTERIOR VERTICAL SEAMS

All exterior vertical seams are fitted with a 2" wide gasket strip and are covered with a metal vertical flashing seam strip. This ensures a dust and water-tight seam.



HOPPER GUSSETS

Heavy duty gussets are bolted to the starter strip and provide the support for the bin system. This design allows the bins to be easily assembled on top of a typical structural steel support frame.



MANHOLES AND VENTS

Manholes are available in either sealed or vented designs. Both are equipped with hinged covers and safety grates. An optional dust filter can be supplied on the vented type.



intersystems

InterSystems reaches a worldwide market and numerous industries with expertise in the engineer and manufacture of bulk material handling products and industrial sampling systems. InterSystems is based in Omaha, Nebraska and operates out of a 200,000 square foot state-of-the-art manufacturing facility.

InterSystems is ISO 9001 and 14001 certified.

9575 N 109th Ave
Omaha, NE 68142 USA
402.330.1500 | 800.228.1483
Fax 402.330.3350
bulkmatl@intersystems.net
www.intersystems.net

© Copyright 2011 InterSystems, Inc. All Rights Reserved.

