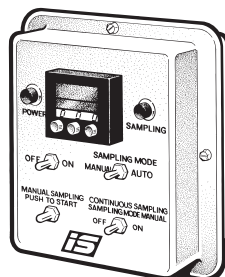


GSS

An industrial sampler for free flowing materials including pellets, chips, flakes, granules and powders. Provides accurate, repeatable samples from gravity flow pipes or spouts for hoppers. Design is very rugged and requires a minimum of space to install. Sample tube spans the product stream and is supported on both walls. When activated, sample tube rotates 360 degrees as the screw auger simultaneously moves the sample to the discharge. Close tolerance auger ensures excellent product clean-out. Standard construction: Dust tight aluminum drive housing, stainless steel sample tube and auger. Other construction materials available as required by application. GSS-U is designed for sanitary application in pharmaceutical and food industries.

CONTROLS

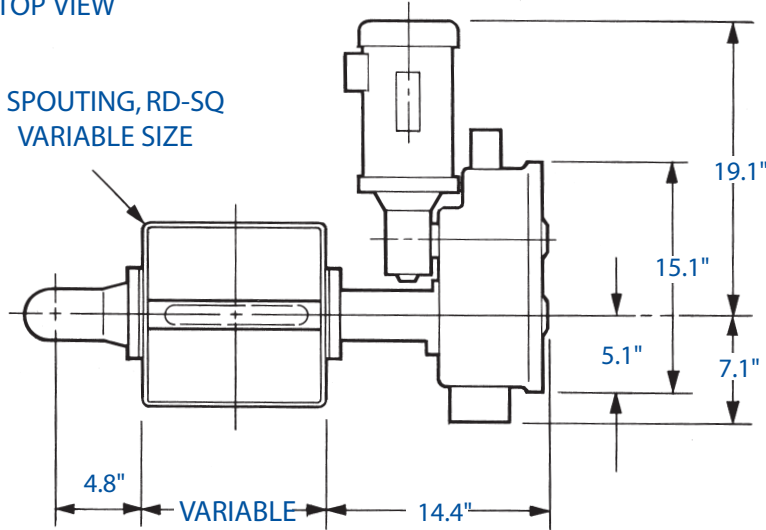
InterSystems control packages are available to suit any sampling control application. The standard units allow manual and automatic sampling modes and contain all the essential components to adjust and control the timing of sampling operations. These units can handle a wide variety of voltages and frequencies and can be constructed for most environments.



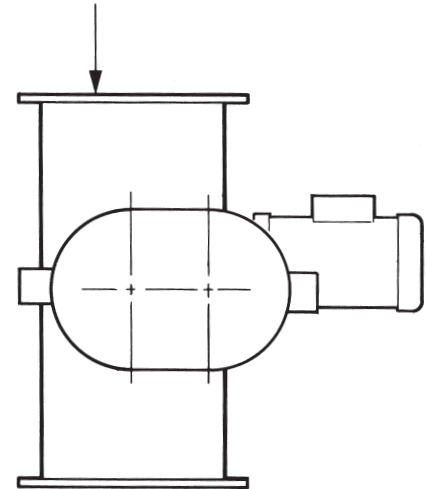
POWER REQUIREMENTS

Electric: 110V, single phase.

TOP VIEW

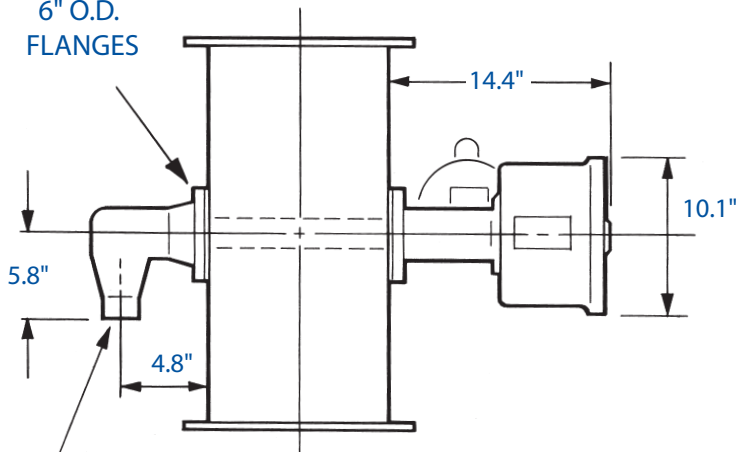


CUSTOM MADE
SPOUTING

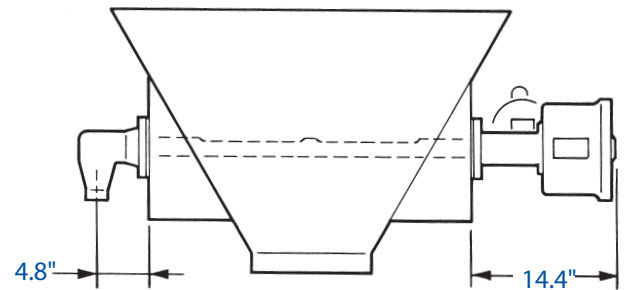


END VIEW

6" O.D.
FLANGES



SIDE VIEW



HOPPER INSTALLATION



Innovators in Industrial Sampling Systems

Intersystems
9575 N 109th Ave
Omaha, NE USA 68142
214.495.9713
Fax 214.495.9741

www.intersystems.net

sampling@intersystems.net

HD-PRTB2009-8